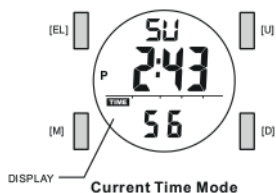


QUICK START UP MANUAL

ACTIVATE YOUR SP1

Your SP1 is on energy saving mode to avoid battery consumption. You must, therefore, activate it by pressing any key for more than 5 seconds.

ASSIGNING THE KEYS



Mode Button [M]

- To select among the Current Time, Dive Recall, Chronograph, Countdown Timer and Dual Time Mode.
- Hold to enter Setting Mode

Up/Start/Stop Button [U]

- To change the setting value or increase the set value during setting Mode.
- To activate the 'start' or 'stop' function during Chronograph and Countdown Timer Mode.
- To change the sub-function display of Current Time Mode.
- To select dive record in Dive Recall Mode.

Down/Reset Button [D]

- To show the Daily Alarm.
- To change the setting value or decrease the set value during setting display.
- To clear the value for the Chronograph and Countdown Timer.
- To select dive record in Dive Recall Mode.

EL Button [EL]

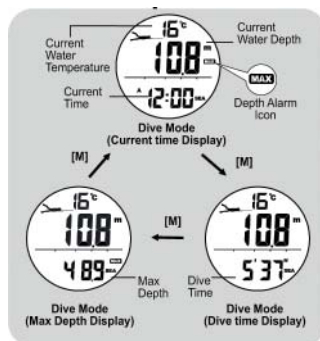
- Hold the [EL] button for 2 seconds to set the auto backlight between ON and OFF.
- To turn on the EL backlight for about 3 seconds.
- Auto Backlight
- When Auto Backlight is set ON, the EL backlight will turn on for 3 seconds automatically when a key is pressed.

NOTE: The major key operations are summarized on the above paragraphs, however please read the coming chapters for the detail operations.

1. CLOCK mode



2. IMMERSION mode



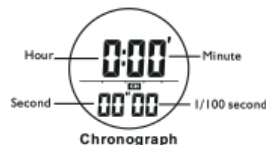
Dive Mode

- The Dive Mode will be activated automatically if the user submerges, and reaches the water level approximately to 1.5 m (4.92 ft).

- When the Dive Mode appear, the following information will be displayed:

- 1) The Current water depth.
- 2) The Current water temperature.
- 3) The Dive Status Indicator.
- 4) The Elapsed Dive Time.
- 5) Current Time Display (Optional).
- 6) Maximum Depth.

3. CHRONOGRAPH mode



Chronograph Mode

- This Watch includes a stopwatch function which measures elapsed time and current split time.
- The measuring capacity of the chronograph:
- Measuring resolution: 1/100 second
- Measuring range: 99 hours, 59 minutes and 59.99 seconds.

How to Use the Chronograph

- When the Chronograph Display is selected, press the [U] button to start the chronograph. Press [U] again to Stop counting.
- When the chronograph is running, press the [D] button will freeze the counting display for user to take a split time.

4. COUNTDOWN mode



Countdown Timer Mode

5. DUAL TIME mode



Dual Time Mode

- This Watch includes a Dual Time Mode which tells users another time when they travel overseas.

How to Set the Dual Time

- To select the setting display, hold the [M] button for 2 seconds in the Dual Time Display, and then the 'Minute' digit will start flashing.
- In setting display, press the [M] button to move the flashing following the adjacent diagram to select among different settings.
- When 'Hour' or 'Minute' is flashing, press the [U] or [D] button to increase or decrease the number (hold down the button to change the number at a higher speed).
- When the setting is completed, hold the [M] button for 2 seconds to exit the setting display. If there is NO key-stroke for 1 minute, the Watch will also exit the setting display automatically.

6. SETUP mode

How to Set the Watch

- To select the setting display, hold the [M] button for 2 seconds in the Current Time Mode, and then the 'Second' digits will start flashing.
- In setting display, press the [M] button to move the flashing following the adjacent diagram to select among different settings.
- During one of the settings (except second) is flashing, press the [U] or [D] button to increase or decrease the number / change the setting (hold down the button to change it at a higher speed).
- When the second digits start flashing, press the [U] or [D] button to reset to zero.
- When the 'beep' (Key tone) is set ON, there will be a beep sound when a key is pressed.
- If the 'chime' (Hourly Chime) is turned ON () the Watch will beep once every hour.
- When the setting is completed, hold the [M] button for 2 seconds to exit the setting display. If there is NO key-stroke for 1 minute, the Watch will also exit the setting display automatically.

7. REGISTER YOUR PRODUCT

By registering your SP1 you allow Omer to send you e-mail updates for your watch and activate the warranty, visit the website www.omersub.com or www.sporasub.com

8. TECHNICAL SPECIFICATION

Current Time Mode

- Hour, Minute, Second display
- Month, Date, Day of Week display
- Auto Calendar from 2000 to 2099
- 12/24 hour format
- Month/Date or Date/Month display
- Hourly Chime
- Daily Alarm
- Temperature Display

Chronograph Mode

- Resolution : 1/100 second
- Range : 99 hours, 59 minutes, 59.99 seconds
- Split Time function

Countdown Timer Mode

- Resolution : 1 second
- Range : 99 hours, 59 minutes, 59 seconds
- Beep once per minute for last 10 minutes
- Beep once per 10 seconds for last minute
- Beep once per second for last 5 seconds
- Beep for 30 seconds when countdown to zero

Dive Mode

- Sea or Lake diving site selectable
- Automatically activate/deactivate Dive Mode when submerge or emerge to 1.5m of water depth.
- Current Dive duration, Depth, Dive site, Current Time, Maximum depth and Water temperature display
- Depth Unit : meter or feet selectable
- Depth resolution : 0.1m / 0.328 ft
- Maximum Depth : 100m / 328ft
- Automatic Dive log memory

Temperature Display

- Unit : °C / °F selectable
- Resolution : 1°C / 1°F
- Range : -10C to +60C / 14F to 140F

Dive Recall Mode

- Maximum 199 records to be recorded and recall
- Each dive record contains:
 - Record number
 - Starting Time and Date
 - Dive Duration
 - Maximum Dive Depth
 - Minimum Water Temperature
 - Dive Site Indication
- Delete current/previous/all records function

Battery

- Type : Lithium Ion
- Dimensions : 20 x 3 mm
- Temperatur of use : -20°C a 50°C
- Code : CR2032 3Volts

8. WARRANTY

This Omer product is warranted to be free of defects in materials or workmanship for two year from the date of purchase in UE and one year outside of UE. Within this period, Omer will, at its sole option, repair or replace any components that fail during normal use. Such repairs or replacement will be made at no charge to the customer for parts or labour. In addition, Omer reserves the right to refuse warranty claims against products or services that are obtained and/or used in contravention of the laws of any country.

You can get the complete multi languages owners manual from our website :

www.sporasub.com